

blueControl Professional

System Integration

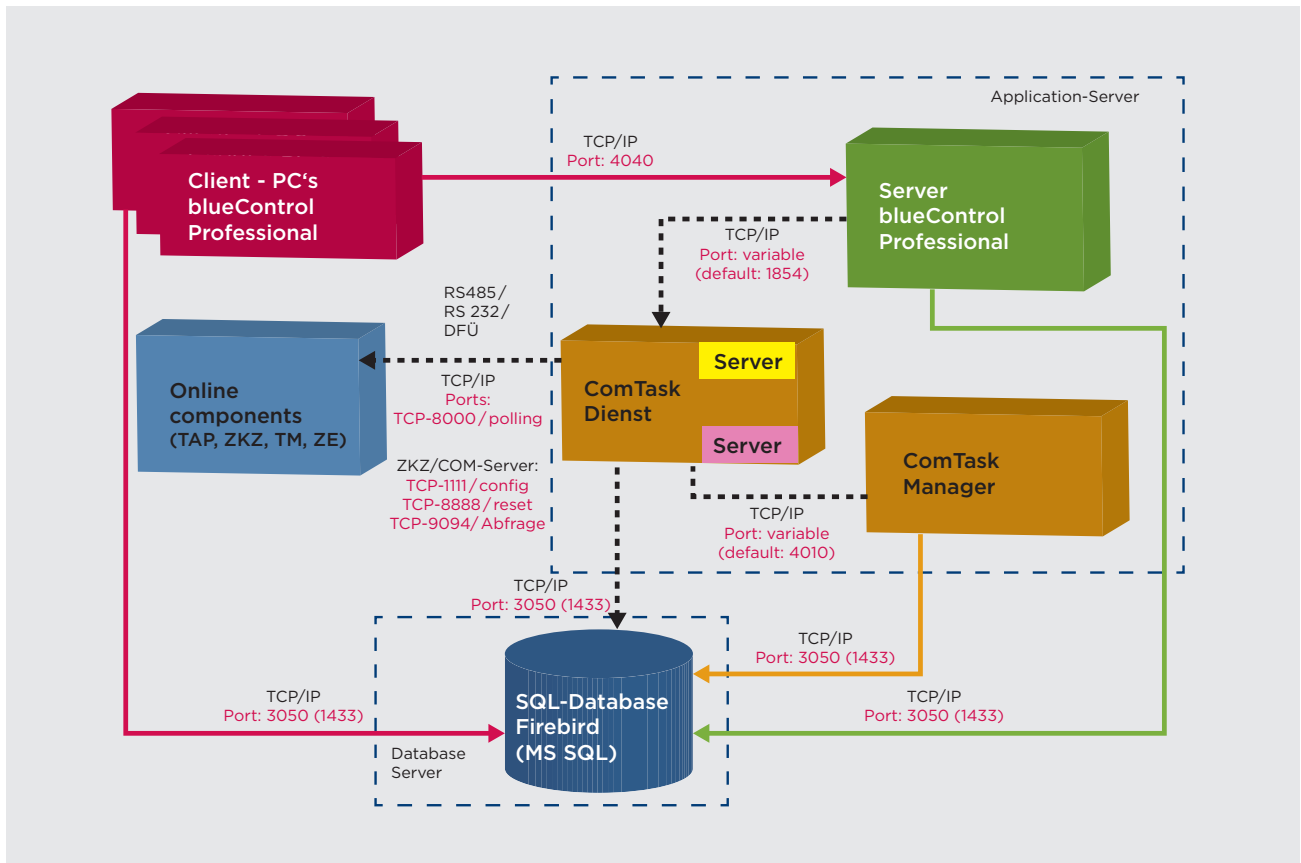
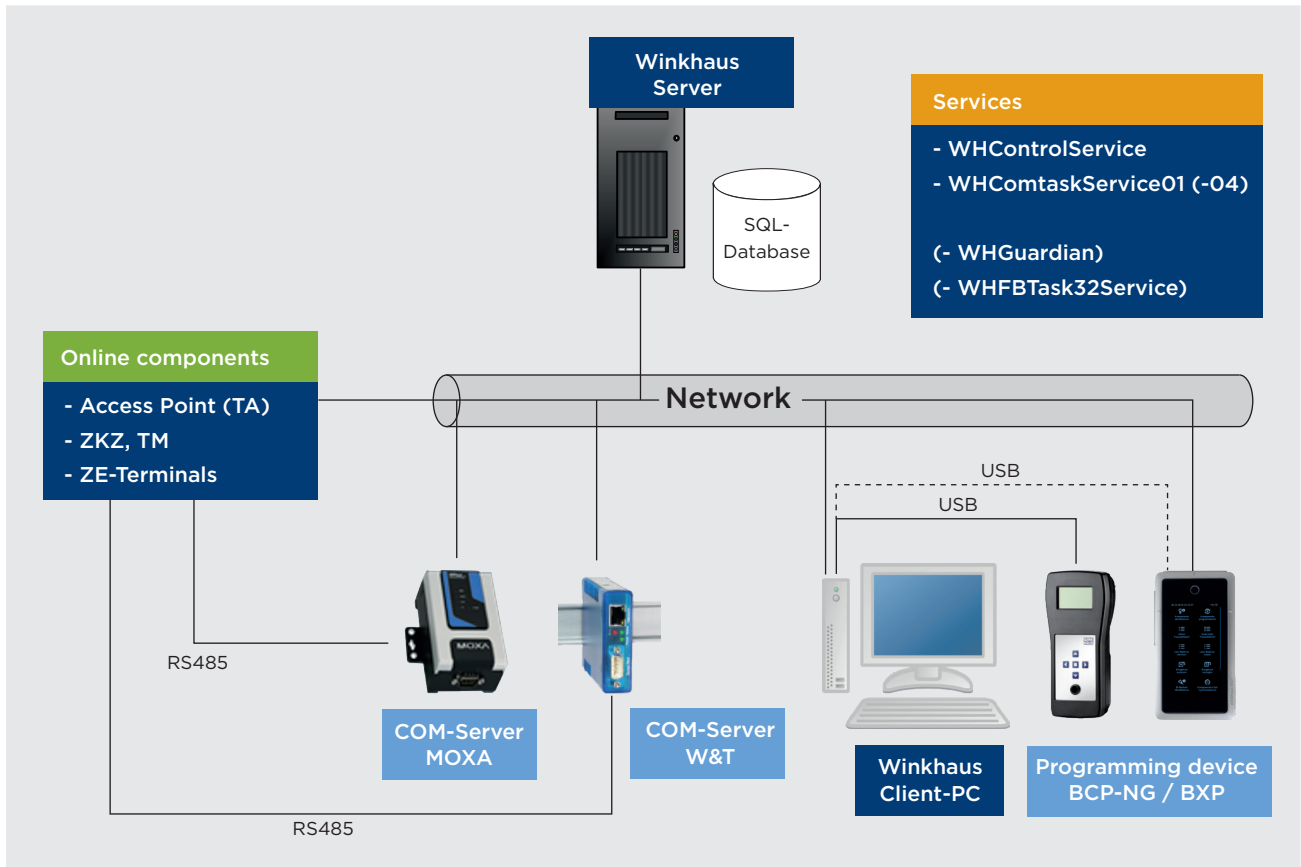
Contents

1	System requirements	Page 03
2	System configuration / used ports	Page 04
3	Server installation	Page 05
4	Client installation	Page 06
5	Data backup / System monitoring	Page 07

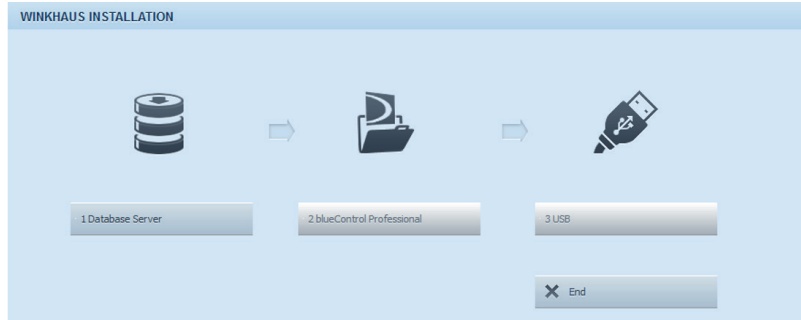
1 System requirements

	Minimum requirements	Recommended
Server PC		
Operating system Windows server	2012, 2012 R2, 2016, 2019 Also as virtual machine (VM)	2012 R2 or 2016
CPU	2 GHz / 2 CPU cores	3 GHz / 6 CPU cores
RAM	4 GB	6 GB
Free hard disk space	10 GB	100 GB
Interfaces	Depending on hardware configuration (LAN / USB)	
Database	Standard SQL database (Firebird) Optionally MS SQL	
Client PC		
Operating system Windows	8, 10	8, 10
CPU	2 GHz	4 GHz
RAM	4 GB	6 GB
Graphics card	min. resolution 1280 x 1024	
Free hard disk space	1 GB	10 GB
Interfaces	USB, LAN, or WLAN (depending on programming device)	
Network bandwidth	10 MBit (synchronous /effective)	100 Mbit (synchronous /effective)

2 System configuration /
used ports

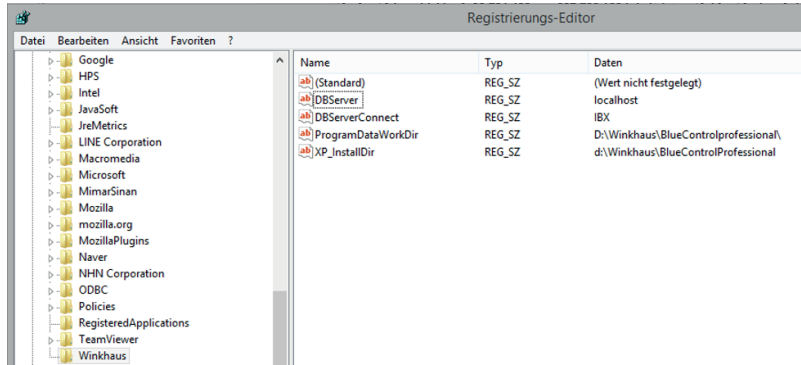


3 Server installation



Important: No Firebird database must be installed on the server!

The Winkhaus installation programme can be used for installing the Winkhaus blueControl Professional software. With the installation the Firebird SQL database, the required Winkhaus services and applications are installed automatically. In addition, the necessary entries are created in the registry.



In the standard installation, the programmes are stored in the programme folder and the data with the Firebird databases in the folder ..\programmdata\winkhaus.

After installation and entry of the licence keys supplied, the blueControl Professional software can be started on the server. The Winkhaus services must be linked with a login as local administrator or a special login account (see table).

	Autostart type	Login / access	Description
Service			
WHGuardian	Automatic	Login account: Local administrator rights	Its only task is to start the services WHControlService and WHComtaskService01 with a time delay (approx. 5 minutes). In combination with Firebird database
WHControlService01 (-04)	Manual	Login account: Local administrator rights	blueControl server process: <ul style="list-style-type: none"> • Data backup • Communication with ComTask • Processing the transactions
WHComtaskService01	Manual	Login account: Local administrator rights	Communication process (ComTask): For data exchange (download / booking transfer) with the online components of the blueControl installation
WHFBTask32Service	Manual	Login account: Local administrator rights	Communication process for remote authorisation (smartphone)

It is also possible to start the blueControl Professional software as client application on the server for testing purposes even after starting the Winkhaus services.

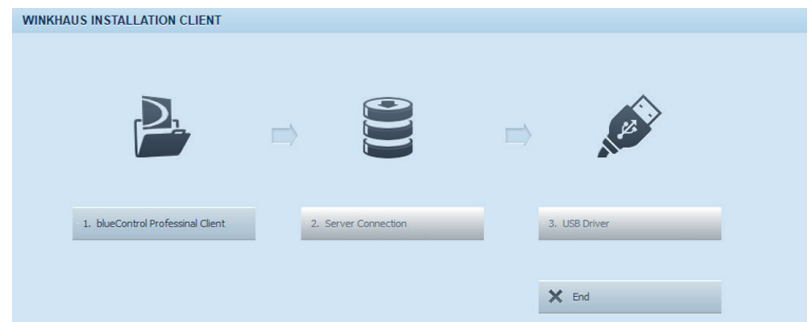
On the server with the Winkhaus server installation blueControl Professional, the following services must have the status Started (executed) as standard.

 WHComtaskService01	Wird ausgeführt	Manuell	.\Rainer
 WHControlService	Wird ausgeführt	Manuell	.\Rainer
 WHGuardian	Wird ausgeführt	Automa...	.\Rainer

The Winkhaus data folder (`..\programmdata\winkhaus`) should be excluded from an external, automatic backup software and the virus scanner.

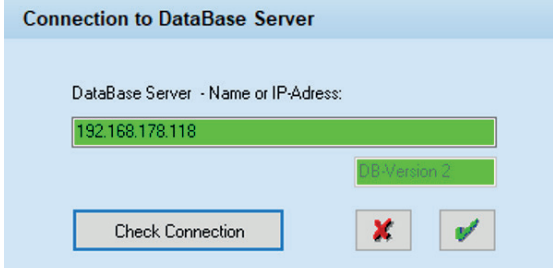
Windows security patches can usually be carried out on the server without any problems. In the case of a release change of the Windows operating system, the release must be requested from Winkhaus beforehand.

4 Client installation



Important: No Firebird database must be installed on the client!

A setup programme is available for the client installation of the Winkhaus software. With the setup, the necessary application programmes are saved in the programme folder and access to the database and the server is queried (server name / IP address) and checked (ports 3050 / 4040).



The dialog box titled 'Connection to DataBase Server' contains the following elements:

- A label 'DataBase Server - Name or IP-Adress:' followed by a text input field containing '192.168.178.118'.
- A dropdown menu showing 'DB Version 2'.
- A 'Check Connection' button.
- Two small icons: a red 'X' in a square and a green checkmark in a square.

For communication with the Winkhaus programming device (BCP NG/ BXP BS) the suitable Windows USB driver is installed.

The necessary entries are stored in the registry.

For the programme start and operation of the client application of the blueControl Professional software, permanent access to the database and the server process is necessary.

Windows security patches can usually be carried out on the server without any problems. In the case of a release change of the Windows operating system, the release must be requested from Winkhaus beforehand.

5 Data backup / System monitoring

The Winkhaus software includes an automatic data backup of the Winkhaus databases. The backup path (also as UNC path) can be freely defined. The data backup is executed by the Winkhaus service (WHControlService). This service (login account) requires the write and delete rights on the backup path.

The data backup automatically creates a folder for each day (Mon, Tue, Wed, Thu, Fri, Sat, Sun) in which the daily backups are stored. The old backups are always overwritten.

The communication to the Winkhaus components and the monitoring of the communication service (WHComtaskService01) is monitored by the Winkhaus server process and can be sent by E-mail to a stored address in case of malfunctions.

In the client software blueControl Professional, the operating status of the communication service is always displayed in the footer. In the terminal group, the status of the connected online components can also be checked at any time via a diagnostic button.

For communication with the Winkhaus online components, LOG files can be defined if required. They contain a record of the communication.

Aug. Winkhaus GmbH & Co. KG

Hessenweg 9
D-48157 Münster
T +49 251 4908-0
F +49 251 4908-145

winkhaus.de
zutrittsorganisation@winkhaus.de