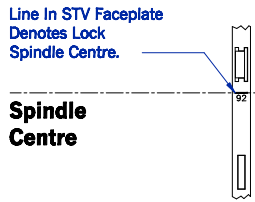
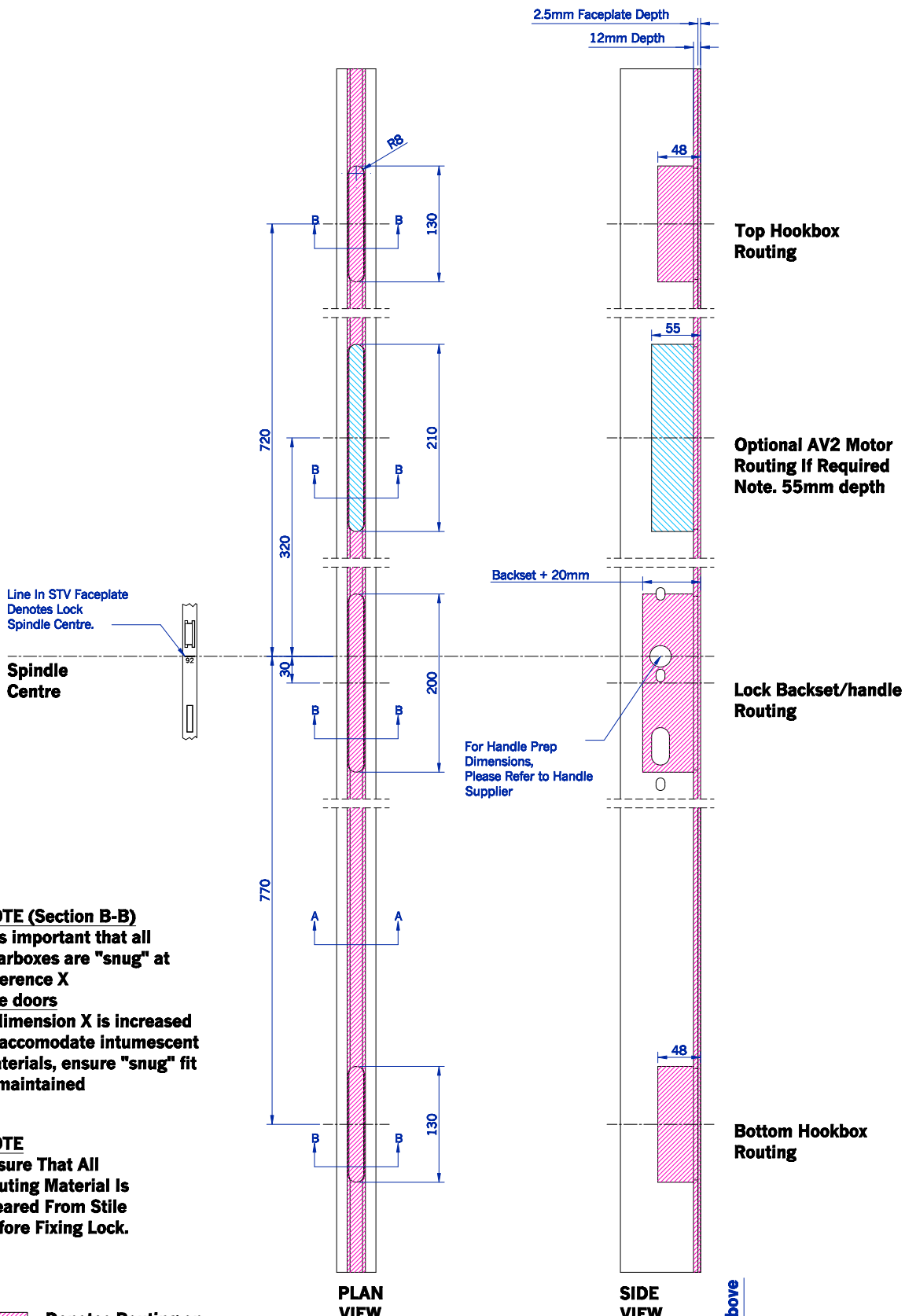


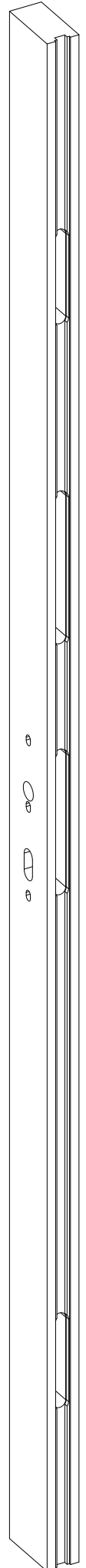
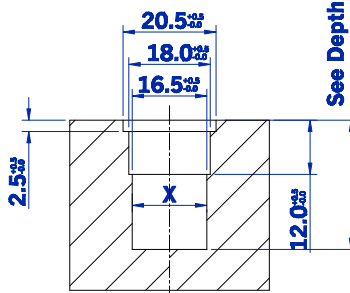
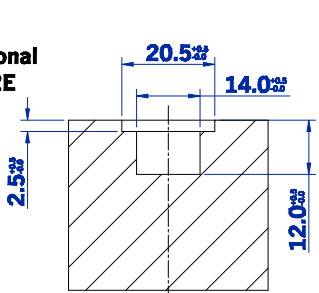
STV, AV2 & AV2E 20mm Faceplate Routing Details for Timber and Composite Doors



NOTE (Section B-B)
It is important that all gearboxes are "snug" at reference X
Fire doors
If dimension X is increased to accommodate intumescent materials, ensure "snug" fit is maintained

NOTE
Ensure That All Routing Material Is Cleared From Stile Before Fixing Lock.

- Denotes Routing on all STV Locks
- Denotes Additional Routing on AV2E



Drawn C Harris	This drawing is the property of Winkhaus (UK) Ltd and is not to be reproduced or copied in any form without written consent.
Scale N/A	
Drawing No. D08005	Issue A
	Date 13/02/12