

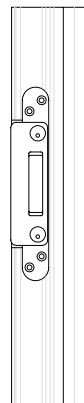
# AV2 Single Pocket Rounded End Keep Routing Details for Timber and Composite Door Sashes with PVC Frame



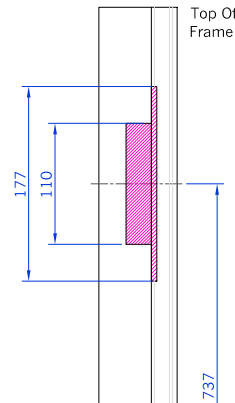
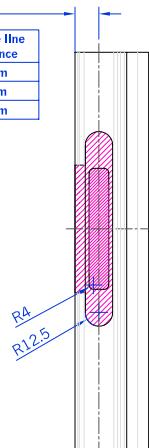
See Table

Keep Type	Centre Line Distance
F24-908	22mm
F24-909	12mm
F24-912	28mm

F24 Rounded End Single Pocket Keep

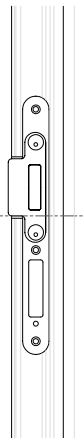


Top Of Frame



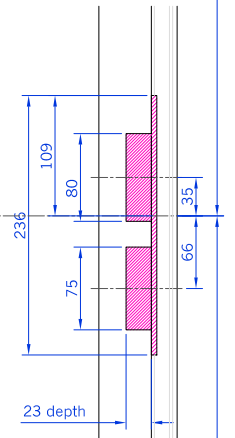
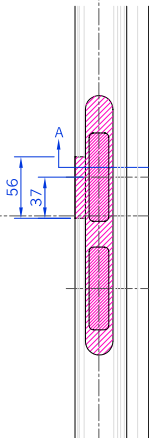
Top Single Pocket Keep Routing

F24 Rounded End Centre Keep



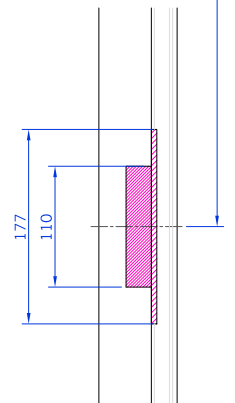
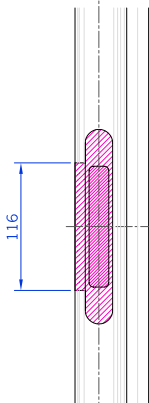
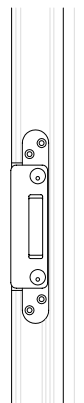
Line In STV Faceplate Denotes Lock Spindle Centre.

Spindle Centre



Centre Keep Routing

F24 Rounded End Single Pocket Keep



Bottom Single Pocket Keep Routing

PLAN VIEW

PLAN VIEW

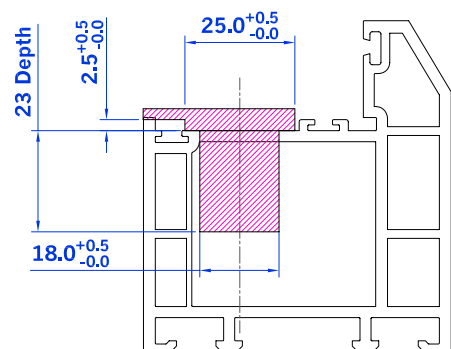
SIDE VIEW



Denotes Routing

**NOTE**  
Ensure That All Routing Material Is Cleared From Stile Before Fixing Lock.

Routing Details Based On Working Air Gap Of 4mm



SECTION A-A

Drawn C Harris	This drawing is the property of Winkhaus (UK) Ltd and is not to be reproduced or copied in any form without written consent.
Scale N/A	
Drawing No. D08012	Issue A
	Date 02/10/08