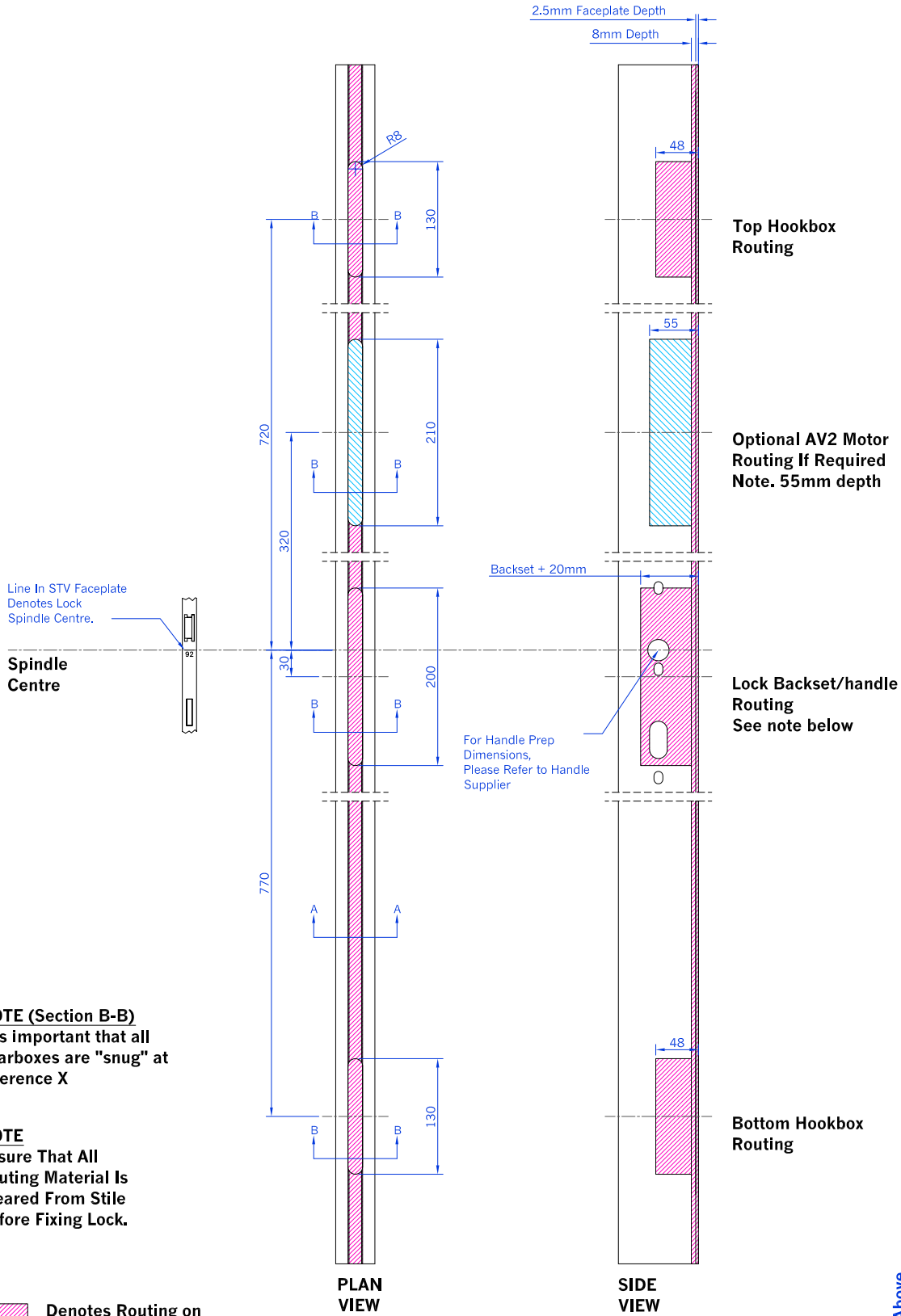


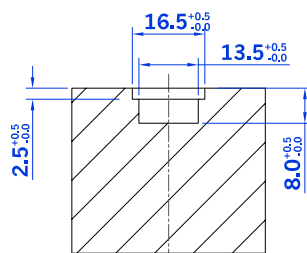
STV, AV2 & AV2E 16mm Faceplate Routing Details for Timber and Composite Doors



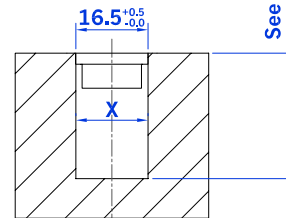
NOTE (Section B-B)
It is important that all gearboxes are "snug" at reference X

NOTE
Ensure That All Routing Material Is Cleared From Stile Before Fixing Lock.

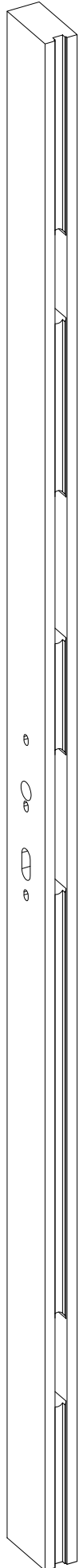
- Denotes Routing on all STV Locks
- Denotes Additional Routing on AV2E



SECTION A-A



SECTION B-B



Drawn C Harris	This drawing is the property of Winkhaus (UK) Ltd and is not to be reproduced or copied in any form without written consent.
Scale N/A	
Drawing No. D08004	Issue A
	Date 02/10/08