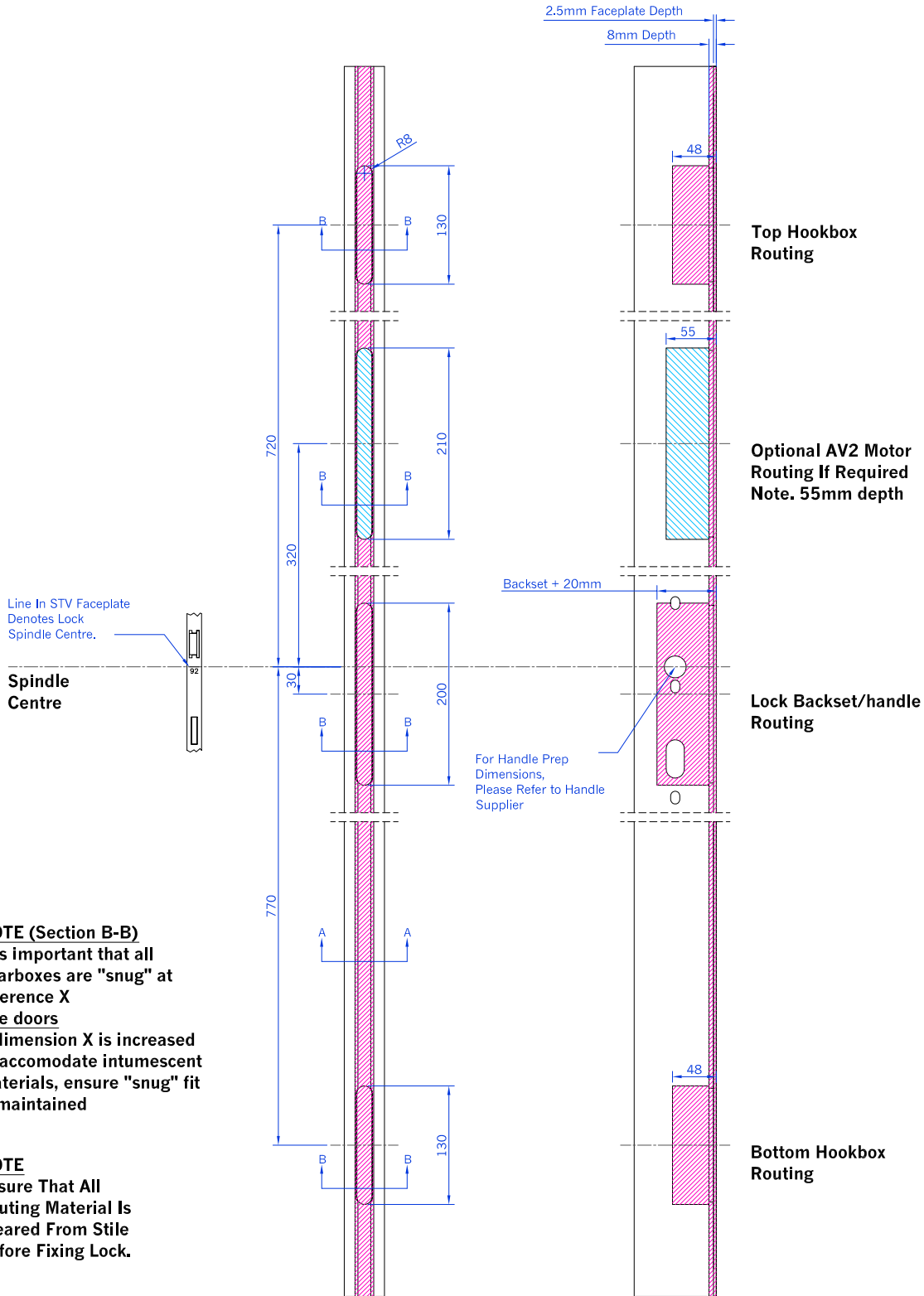


STV, AV2 & AV2E 20mm Faceplate Routing Details for Timber and Composite Doors



Line In STV Faceplate Denotes Lock Spindle Centre.

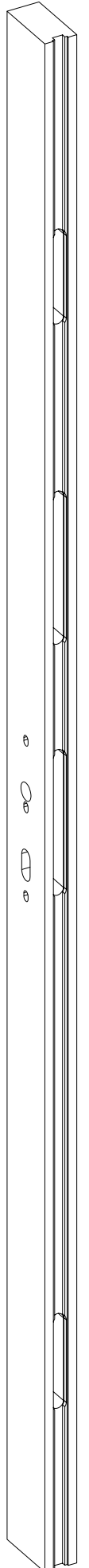
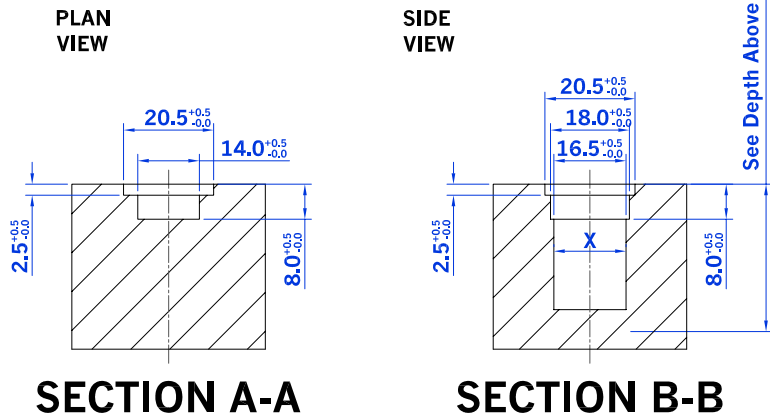
Spindle Centre

For Handle Prep Dimensions, Please Refer to Handle Supplier

NOTE (Section B-B)
It is important that all gearboxes are "snug" at reference X
Fire doors
If dimension X is increased to accommodate intumescent materials, ensure "snug" fit is maintained

NOTE
Ensure That All Routing Material Is Cleared From Stile Before Fixing Lock.

- Denotes Routing on all STV Locks
- Denotes Additional Routing on AV2E



Drawn C Harris	This drawing is the property of Winkhaus (UK) Ltd and is not to be reproduced or copied in any form without written consent.
Scale N/A	
Drawing No. D08005	Issue A
	Date 02/10/08