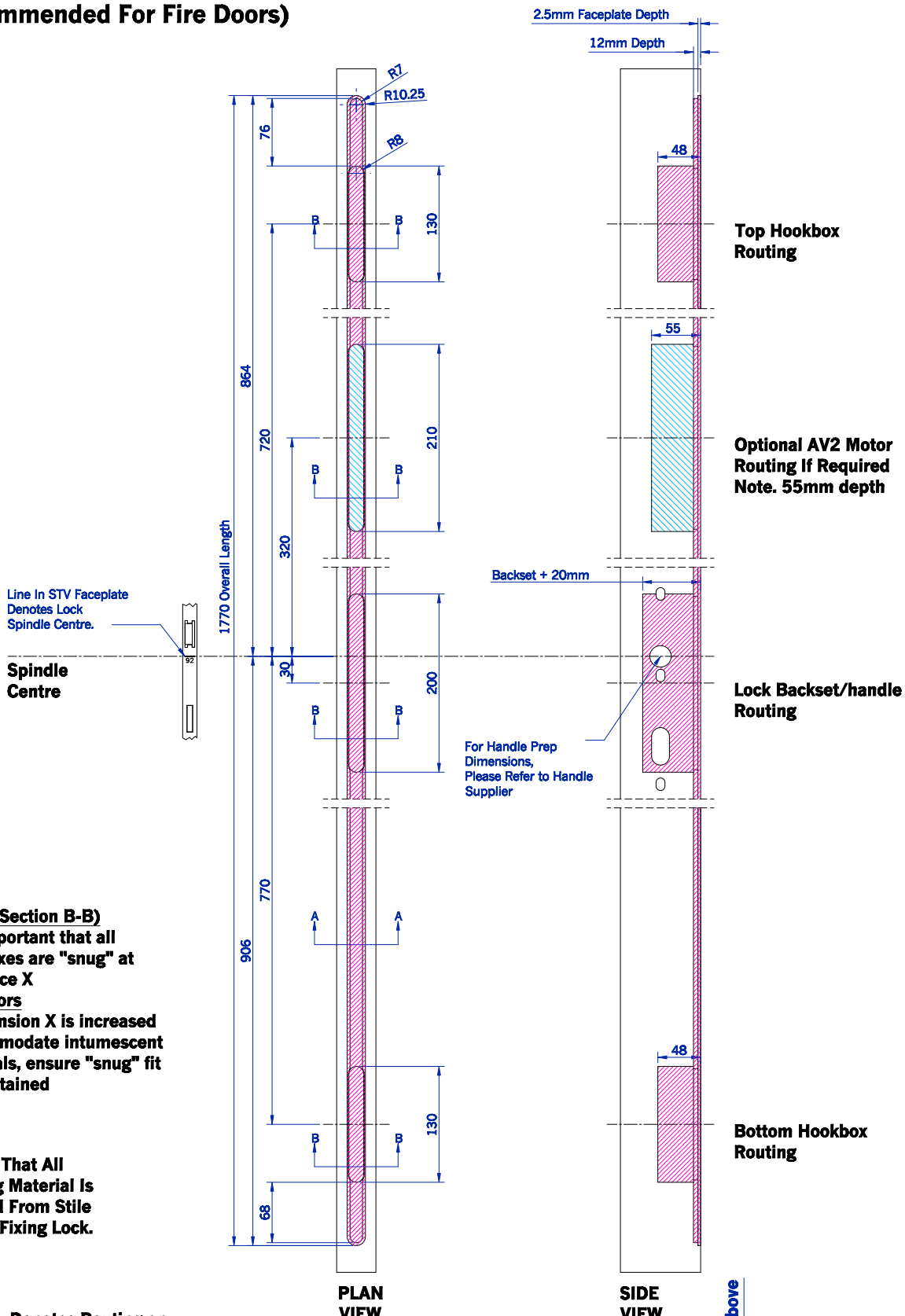


# STV, AV2 & AV2E 20mm Rounded End Faceplate Routing Details for Timber and Composite Doors

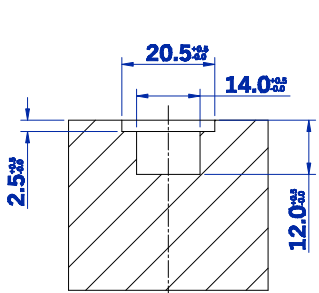
(Recommended For Fire Doors)



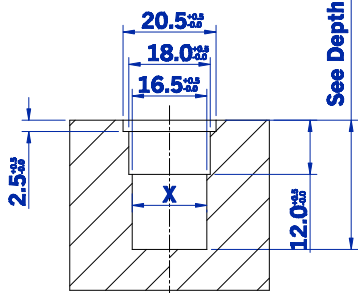
**NOTE (Section B-B)**  
It is important that all gearboxes are "snug" at reference X  
**Fire doors**  
If dimension X is increased to accommodate intumescent materials, ensure "snug" fit is maintained

**NOTE**  
Ensure That All Routing Material Is Cleared From Stile Before Fixing Lock.

- Denotes Routing on all STV Locks
- Denotes Additional Routing on AV2E

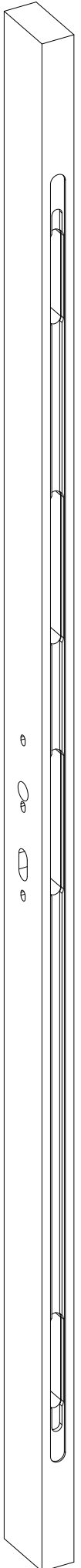


**SECTION A-A**



**SECTION B-B**

See Depth Above



Drawn <b>C Harris</b>	This drawing is the property of Winkhaus (UK) Ltd and is not to be reproduced or copied in any form without written consent.
Scale <b>1:4</b>	
Drawing No. <b>D08006</b>	Issue <b>A</b>
	Date <b>13/02/12</b>