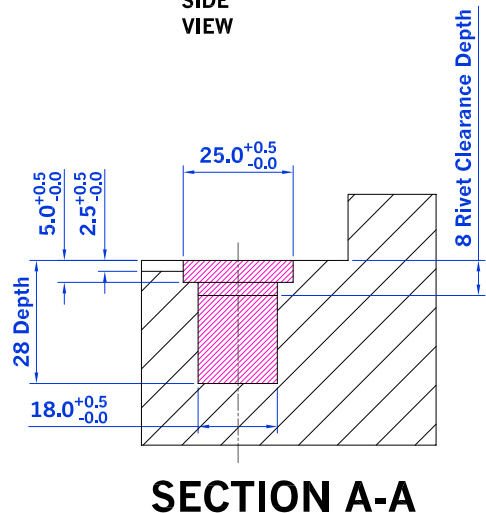
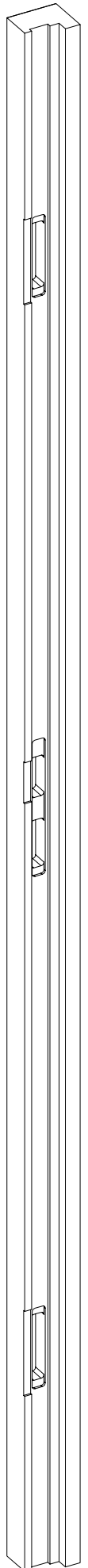
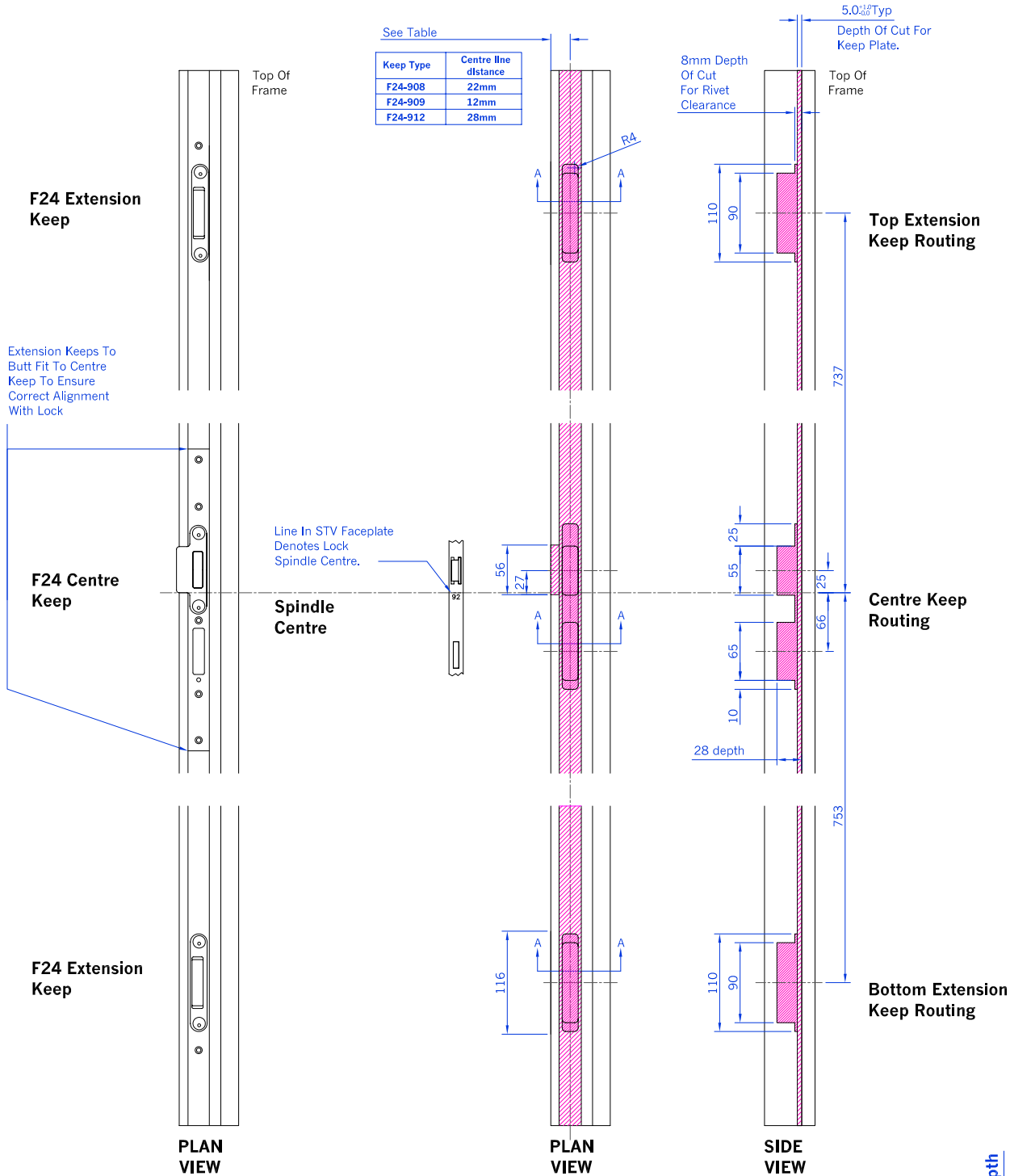


# F24 Extension Keep Routing Details for Timber and Composite Door Sashes with Timber Frame



**NOTE**  
Ensure That All Routing Material Is Cleared From Stile Before Fixing Lock.

Routing Details Based On Working Air Gap Of 4mm

Drawn C Harris	This drawing is the property of Winkhaus (UK) Ltd and is not to be reproduced or copied in any form without written consent.
Scale N/A	
Drawing No. <b>D08023</b>	Issue A
	Date 24/09/08