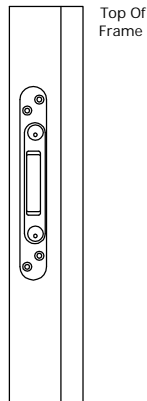


Cobra / Trulock Single Pocket Rounded End Keep Routing Details for Timber / Composite Doors with Timber Frame

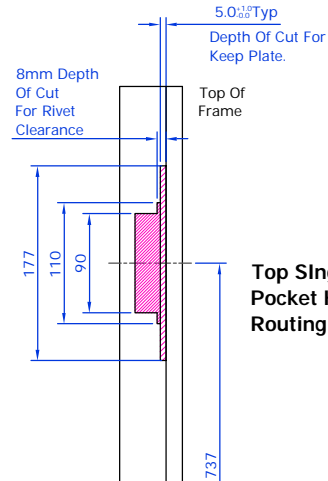
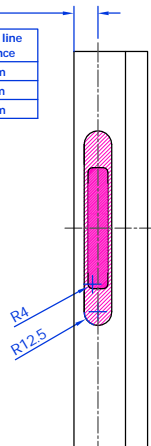


**F24-908
Rounded End Single
Pocket Keep**



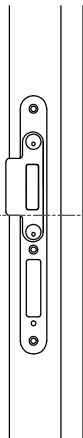
See Table

Keep Type	Centre line distance
F24-908	22mm
F24-909	12mm
F24-912	28mm



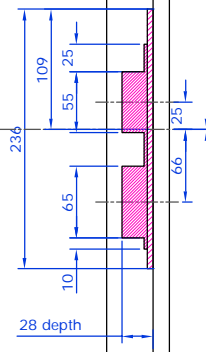
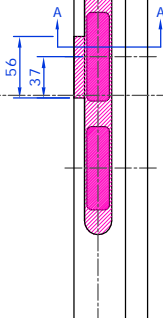
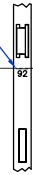
**Top Single
Pocket Keep
Routing**

**F24-908
Rounded End
Centre Keep**



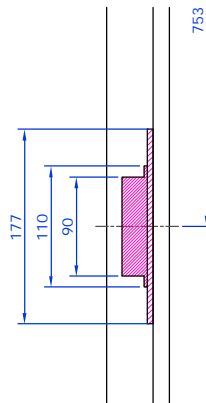
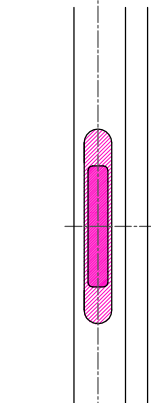
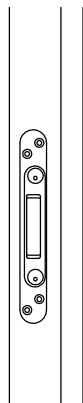
Line In STV Faceplate Denotes Lock Spindle Centre.

**Spindle
Centre**



**Centre Keep
Routing**

**F24-908
Rounded End Single
Pocket Keep**

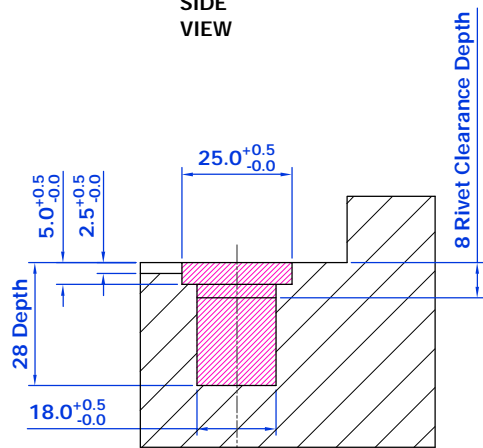


**Bottom Single
Pocket Keep
Routing**

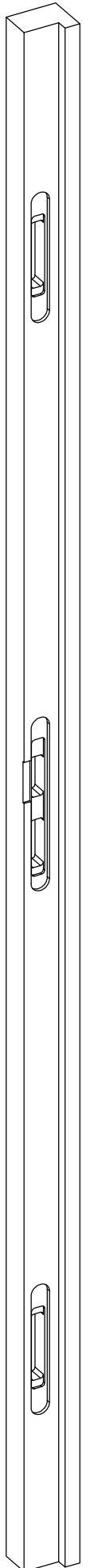
Denotes Routing

NOTE
Ensure That All Routing Material Is Cleared From Stile Before Fixing Lock.

**Routing Details
Based On Working
Air Gap Of 4mm**



SECTION A-A



Drawn C Harris	This drawing is the property of Winkhaus (UK) Ltd and is not to be reproduced or copied in any form without written consent.	
Scale N/A	Issue B	Date
Drawing No. D08020		