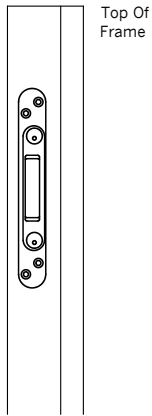


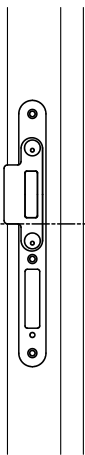
Short Cobra / Trulock Single Pocket Rounded End Keep Routing Details for Timber / Composite Doors with Timber Frame



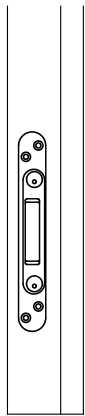
**F24-908
Rounded End Single
Pocket Keep**



**F24-908
Rounded End
Centre Keep**

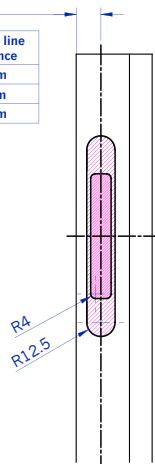


**F24-908
Rounded End Single
Pocket Keep**

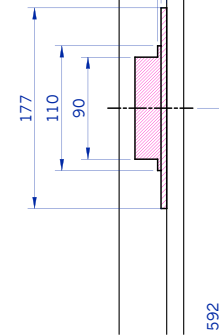


See Table

Keep Type	Centre line distance
F24-908	22mm
F24-909	12mm
F24-912	28mm



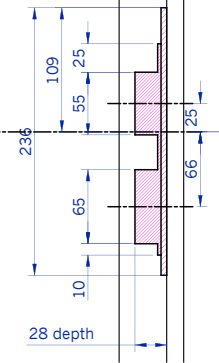
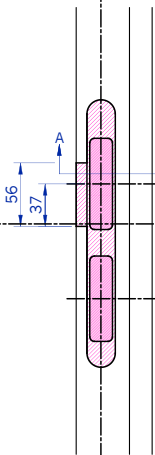
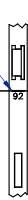
5.0^{+0.5} Typ
Depth Of Cut For
Keep Plate.
8mm Depth
Of Cut
For Rivet
Clearance
Top Of
Frame



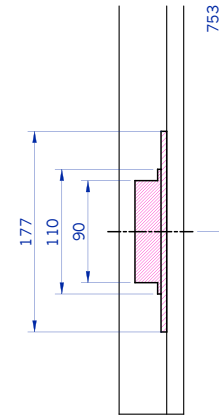
**Top Single
Pocket Keep
Routing**

Line In STV Faceplate
Denotes Lock
Spindle Centre.

**Spindle
Centre**



**Centre Keep
Routing**



**Bottom Single
Pocket Keep
Routing**

**PLAN
VIEW**

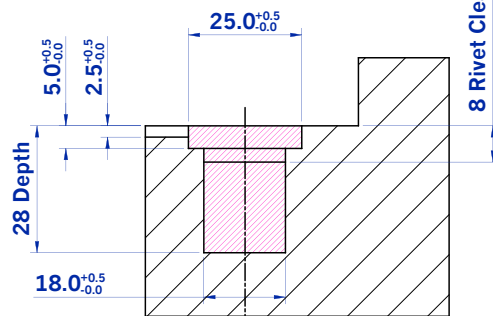
**PLAN
VIEW**

**SIDE
VIEW**

Denotes Routing

NOTE
Ensure That All
Routing Material Is
Cleared From Stile
Before Fixing Lock.

**Routing Details
Based On Working
Air Gap Of 4mm**



SECTION A-A

Drawn C Harris	This drawing is the property of Winkhaus (UK) Ltd and is not to be reproduced or copied in any form without written consent.
Scale N/A	
Drawing No. D08020	Issue B
	Date 17/12/08

