

keyTec N-tra

The versatile turn key system



Certified quality from Winkhaus

Tradition meets innovation

Winkhaus has offered uncompromising commitment to quality since 1854 and is very successful as a result. We have constantly driven up quality standards for access organisation with countless innovations. From the concept to the production of our electronic and mechanical locking systems, we always focus on maximum benefit for our customers. Our products are continuously improved and updated to the latest technical standards so that you and your customers always profit from innovative and long-lasting systems 'engineered in Germany'.

Certified products

International testing institutions place high demands on locking systems. Winkhaus locking cylinders and keys are tested according to DIN 18252, EN 1303, EN 15684, VdS 2156, VdS 2386 and SKG NEN 5089.

High quality standards

Winkhaus assures high product quality with continuous internal monitoring. With consistent quality management in accordance with ISO 9001, the high quality level of our locking systems is assured for the long-term – from the core functions to the surface finish. We also have our products and products monitored regularly by independent testing institutions.

Expertise and sound advice

Winkhaus offers you investment security with well-structured locking systems and excellent service competence in all areas – from technical planning by Winkhaus engineers to consultation and conceptual elaboration of locking hierarchies, marketing support for specialist dealers and system introduction. Availability on short notice is a matter of course for Winkhaus.

keyTec N-tra

Grow with your demands



keyTec N-tra+ turn key system

Turn key systems for properties of all sizes

For small companies or large industrial plants, or public facilities such as city halls or universities, schools or daycare centres – the keyTec N-tra turn key system is the best solution wherever orderly and secure access is required.

Security can be this versatile

If you are looking for a convenient solution for your project, the keyTec N-tra turn key system is ideal choice. N-tra can implement the widest range of locking hierarchies and can be tailored to your specific requirements with options such as master keys and central cylinders. With the standard anti-drilling and picking protection and an additional security card for ordering extra keys and cylinders, N-tra offers protection at the highest level. The ergonomic key made of wear-resistant nickel silver is also very convenient in use.

'With keyTec N-tra I always have high investment security – for private homes or large locking systems.'

Paul Baumann
Building security planner

Always the right choice

keyTec N-tra satisfies all requirements

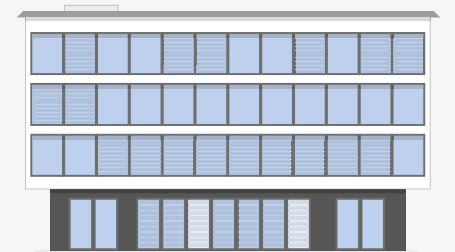
Comfort and security for private homes and small companies

High-performance locking technology is now also available for small locking systems, private homes, medical practices, shops and small businesses. N-tra really proves its worth in day-to-day use. With central cylinders, you only need one key for all doors. The ergonomic rounded form fits your hand comfortably and protects your pockets and bags. The reversibility and symmetrical geometry make key insertion particularly easy.



Full use for medium-sized companies

The possibilities that keyTec N-tra offers are especially advantageous for medium-sized commercial properties, office buildings or daycare centres and schools. Different locking hierarchies can be created with this system. Thanks to its profile cylinders with free moving cams, N-tra also complies with directives for panic doors required for use in schools, etc. With the use of wear-resistant nickel silver material, the key is especially durable and long-lasting.



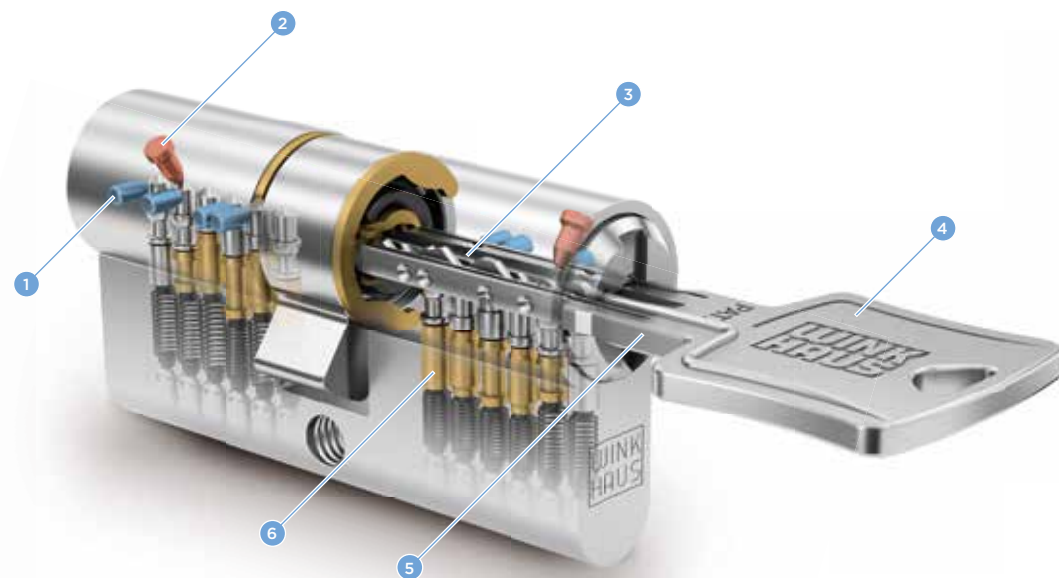
Flexibility for large companies

Demands on the locking system also increase with company growth and building expansion. keyTec N-tra promises maximum flexibility, because the locking system grows with your company. You can upgrade from keyTec N-tra to keyTec N-tra+ easily and without operational disruption. Locking authorisations and hierarchies can be supplemented and extended. keyTec N-tra+ also has additional functions that make the locking system even more dynamic and reliable.



keyTec N-tra

The convenient solution for medium-sized properties



- 1 Lateral pin for side locking level
- 2 Profile check pin
- 3 Rib profile
- 4 Ergonomic key head
- 5 Elongated shoulder of the key
- 6 6 pin tumblers

keyTec N-tra is the ideal solution for small to medium-sized properties. The rounded tip and a horizontal insert position ensure that the key can be inserted into the cylinder even more easily and securely. The shoulder of the key has a length of 13.5 mm, which makes the system ideal for modern security fittings.

An overview of the advantages of keyTec N-tra

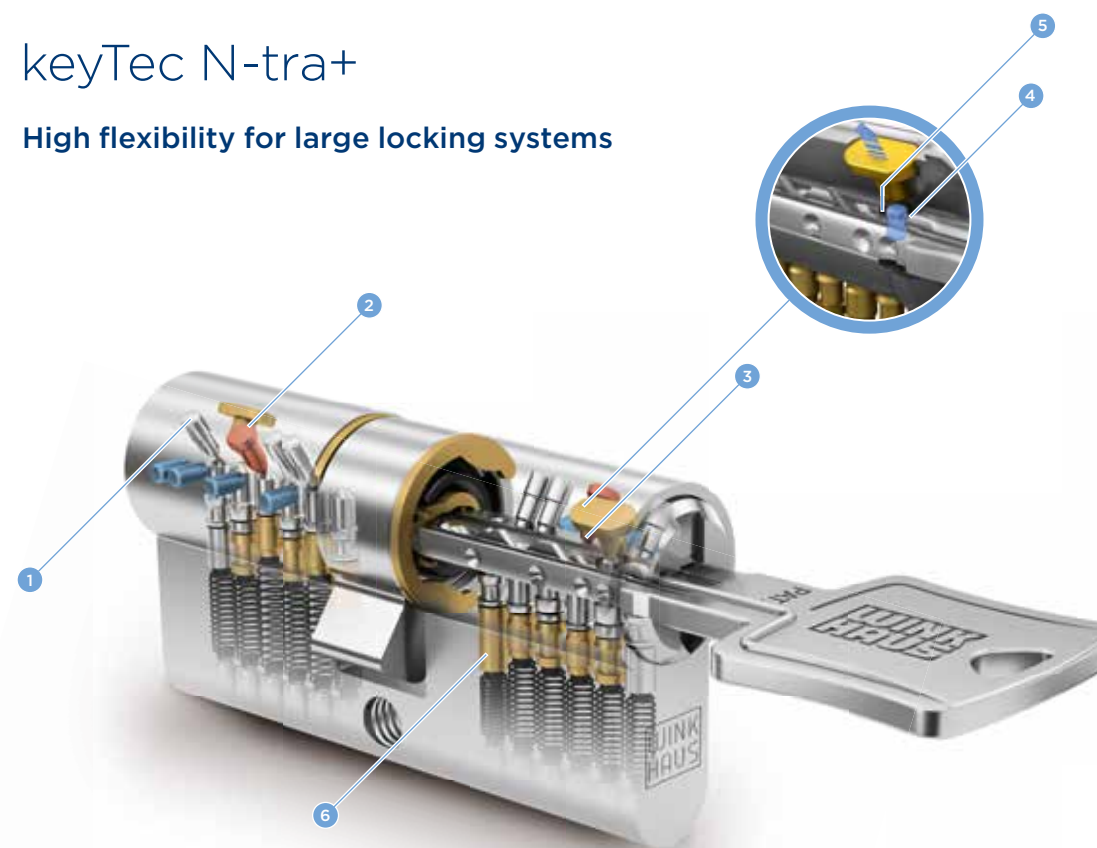
- + 6 spring-mounted solid tumblers and up to 8 radial pins on two locking levels
- + Standard anti-drilling and picking protection
- + Protection against manipulation and catch pin function
- + Protected by patent
- + Suitable for individually-secured cylinders and small to medium-sized locking systems



*in progress

keyTec N-tra+

High flexibility for large locking systems



- 1 Lateral pin for top locking level
- 2 Profile check pin
- 3 Control element
- 4 Additional element in the key
- 5 AZE Protection
- 6 6 pin tumblers

The advantages of keyTec N-tra+ can be fully utilised in large properties with complex locking hierarchies. The system promises investment security for company growth. Locking hierarchies can be easily expanded and an upgrade from keyTec N-tra to keyTec N-tra+ is possible during operation, because only individual cylinders and keys have to be replaced or added. With the additional AZE Protection element, N-tra+ offers additional security and flexibility.

An overview of the advantages of keyTec N-tra+

- + 6 spring-mounted solid tumblers and up to 14 radial pins on 3 locking levels
- + Technical copy protection
- + Optimum security with additional AZE Protection element
- + Protected by patent
- + Suitable for large locking systems and flexible for building expansion



*in progress

Aug. Winkhaus GmbH & Co. KG

Hessenweg 9
48157 Münster
Germany

T +49 251 4908 - 0
F +49 251 4908 - 145

winkhaus.de
zutrittsorganisation@winkhaus.de