

activPilot Select

The fully-concealed turn-tilt fitting system for heavy weights.



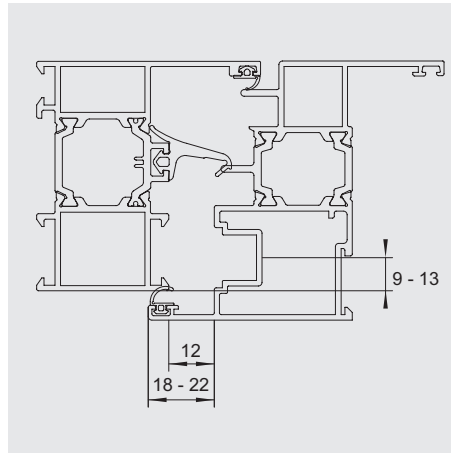
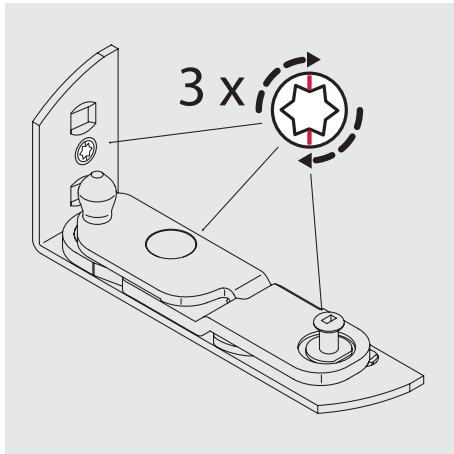
in
windows

For aluminium windows
with 16 mm eurogroove

activPilot Select

With bayonet closure –

Positive and non-positive connection without predrilling.



Technical features

- For 9 mm centre groove position the standard rebate depth must be at least 20 mm
- For 13 mm centre groove position the standard rebate depth must be at least 29 mm
- Airgap 12 mm
- Overlap 18 to 22 mm
- Powerful mechanics. Suitable for sash weights of up to 100 kg* without additional requiring parts for load transfer
- Upgradable to 150 kg* sash weight



Advantages of the fitting system

- + Efficient production by clampable locking components, corner and shear hinges
- + Without the need to drill holes for screws in the corner connector
- + Simple three-dimensional adjustment
- + Suitable for door and window sashes up to 3 m² and 150 kg*
- + Opening angle > 95°
- + Upgrade from 100 kg* to 150 kg* without additional processing of the sash and frame
- + Energy efficiency – sealing plane is not interrupted
- + For burglar-resistant windows according to DIN EN 1627-1630
- + Certified according to QM 328

* The maximum sash weight depends on the frame geometry!