

## No matter how you turn it, keyTec X-tra is the favourite key



Winkhaus likes to make good things even better. This is also the case with the keyTec X-tra reversible key system, with which Winkhaus is setting new standards in convenience and design yet again. Suitable for individually-secured cylinders and locking systems, keyTec X-tra impresses thanks to its unique features and patent protection.

### keyTec X-tra from Winkhaus – no other key like it

Reversible keys are always easy to use. However, Winkhaus's X-tra offers extra special convenience: a new tip and a vertical insert position ensure that the key can be inserted even more easily and securely.

### Now keys are turning colourful: the keyTec X-tra colour variety.

Which key opens which doors? Thanks to the new key caps it is easier to keep track of everything. They have an attractive appearance, make the key slip-proof and facilitate the organisation of the locking system. Easy retrofit: simply put the caps onto the keys.

**Winkhaus. Our expertise provides the best solution.**

Winkhaus has offered uncompromising commitment to quality since 1854 with great success. Numerous innovations have enabled us to consistently advance quality standards for window fittings, door technology and security door locking systems. Winkhaus products represent state-of-the-art German-made window technology.

### Aug. Winkhaus GmbH & Co. KG

Bohlweg 43  
D-48147 Münster  
T + 49 (0) 251 4908-0  
F + 49 (0) 251 4908-145

[www.winkhaus.com](http://www.winkhaus.com)

Your Winkhaus partners:



ZO CD Nov.2015 Print-no. 999 000 496 All rights, including the right of alteration, are reserved.

Always precise **WINKHAUS**

## keyTec X-tra

The modular reverse  
key system



»At last, a locking system which focuses on design and convenience!«

Ulrich Meyer, architect

**keyTec X-tra has won me over completely:**

- + Convenient reversible key
- + For both individual cylinders and locking systems
- + Long patent term
- + Flexible and future-proof thanks to modular cylinder design

## The flexible system which matches your requirements

### Modular design for greater flexibility

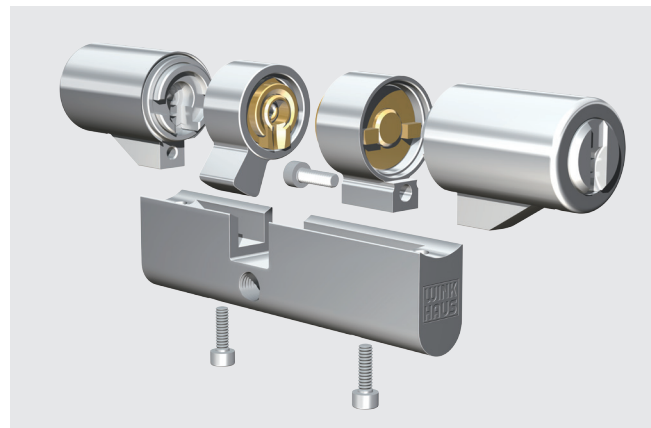
These modular cylinders can be adjusted to different door thicknesses at any time. The advantage: when requirements change – a department is relocated, for instance – keyTec X-tra can be reused in the new location. All cylinders can be adjusted to different lengths and types.

### X-tra protection guaranteed

Besides being highly convenient, the keyTec X-tra also makes things difficult for unauthorised users. All X-tra cylinders are equipped with drilling and pulling protection as standard. These protection features make it very difficult to open doors without authorisation.

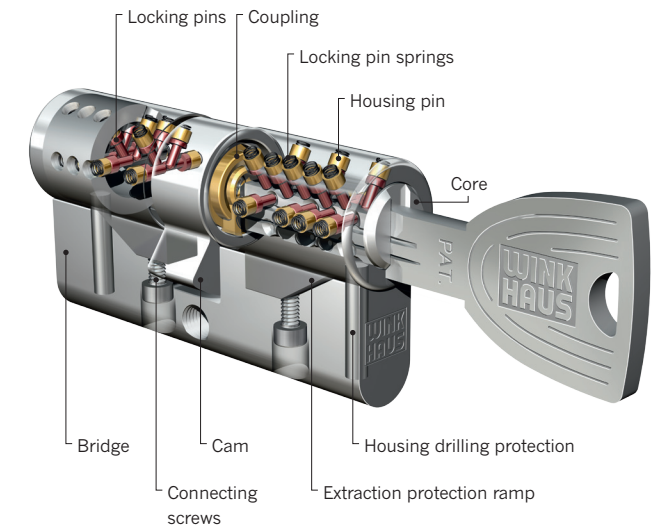
### X-tra suitable for all systems, from complex to small

keyTec X-tra is the ideal system for both individually-secured cylinders and locking systems in all building types, from single family homes through to office buildings with complex locking hierarchies. Keyed-alike cylinders can also be easily provided with a special, exclusive customer profile.



The keyTec X-tra cylinder's modular design ensures it can be adjusted as required to fit different door thicknesses.

## A technology that has it all: innovation, convenience, patent



### keyTec X-tra – advantages in brief

- + For individually-secured cylinders and locking systems
- + New tip on key ensures key is inserted easily
- + Elongated key bow for modern protection fittings
- + Modular cylinder design makes it possible to change length and type
- + Drilling and anti-pulling protection fitted as standard
- + Ergonomic shape
- + Attractive, new key design
- + Long patent term up to 2025
- + Up to twenty lateral pins in four rows
- + Vertical key insertion