

Operating instructions

blueSmart App

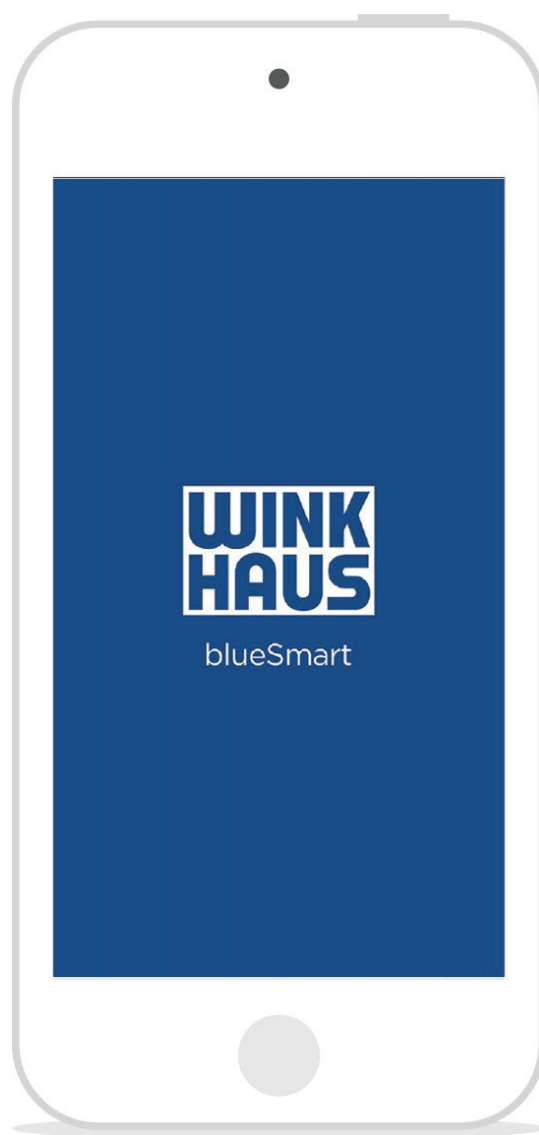


Table of Contents

Important: Please read the operating instructions before using the blueSmart App. Improper use will exclude any warranty!

1. Description	Page 3
2. System conditions and smartphone versions	Page 3
3. Customer service	Page 3
4. Purpose of this manual	Page 4
5. Starting the app	Page 4
5.1 Register Active Key	Page 4
5.2 Select Active Key	Page 4
5.3 Enter password	Page 5
5.4 Synchronize with central administration software	Page 5
5.5 Start screen	Page 6
5.6 Identify ID medium	Page 6
5.7 Identify component	Page 7
5.8 Read events	Page 8
5.9 Battery replacement function	Page 9
5.10 Synchronize time	Page 10
6. Tab Bar functions	Page 11
7. Error elimination and description	Page 12

1 Description:

Thanks to the blueSmart App you can make your blueSmart locking system even smarter!

Use your Active Key as a compact programming device! Use your smartphone to transmit programming commands for your blueSmart components from the blueSmart administration software to your Active Key via the mobile network. So there is no longer the need for a network connection or even an additional administration software for remote units of your blueSmart locking system. Simply communicate changes of authorisation to your blueSmart components with your Active Key and the intuitive blueSmart App.

2 System requirements and smartphone versions:

In order to use the blueSmart App you require the administration software blueControl Professional in the 4.5 version or higher, the additional module "Remote authorisation and remote programming" (item no. 505 288 2) and a system-specific blueSmart Active Key that needs to be authorised for this module.

- Available as iOS version: iOS 10 or higher

Smartphones must feature Bluetooth 4.0 or higher.

Display of the app needs to be enhanced for use on tablet PCs.

3 Customer service

Our Customer Service will be happy to answer any questions that you may have.

Germany

Aug. Winkhaus GmbH & Co. KG
Hessenweg 9
48157 Münster
T +49 251 4908-110

Austria

Winkhaus Austria GmbH
Oberfeldstraße 24
5082 Grödig
T: +43 6246722260

Spain

Winkhaus Ibérica S.A.
PAE La Marina
C/ de la Creativitat, 7
08850 Gavà/Barcelona
T: +34 936334470

Poland

Winkhaus Polska Beteiligungs
spółka z ograniczoną
odpowiedzialnością sp.k.
ul. Przemysłowa 1
64 130 Rydzyna
T: +48 655255700

France

Winkhaus France SAS
30 Rue de l'Expansion
67150 Erstein
T +33 895795958

Netherlands

Winkhaus Nederland B.V.
Landauer 29
3897 AB
Zeewolde
T: +31 365227744

4 Purpose of this manual:

These instructions ensure safe handling of the blueSmart App.

- Read the instructions before starting any work.
- Always comply with specifications such as operational and safety instructions.
- Keep instructions in a safe place ready for future use.
- The images are provided to ensure basic understanding and may differ from the actual version that you have.

5 Starting the app:

5.1 Register Active Key:

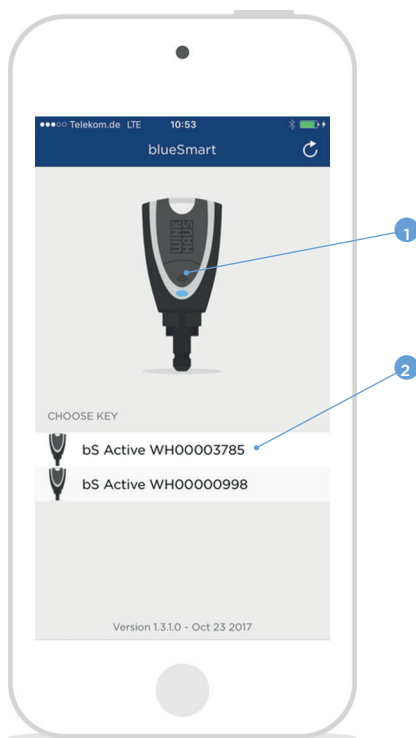
The components in the locking system are managed with the Active Key.

Prerequisite:

- Bluetooth connection of the smartphone must be active.
When closing the app the Bluetooth connection of the Active key is automatically interrupted. You can change these settings in the device settings of your iPhone selecting "blueSmart".

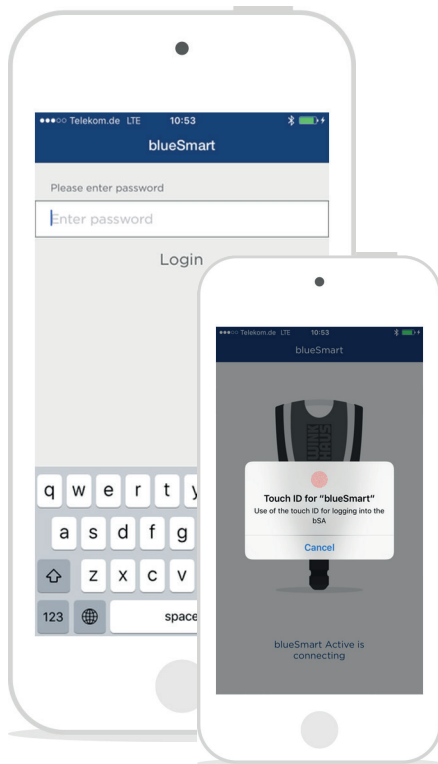
5.2 Select Active Key:

1. Launch app.
2. Press button (1) on the Active Key.
The Active Key is activated and connected to the app.
3. Select Active Key.



Note: If more than one Active Key is detected, you can select the required key from the list (2). For future logins with this smartphone the key is automatically connected.

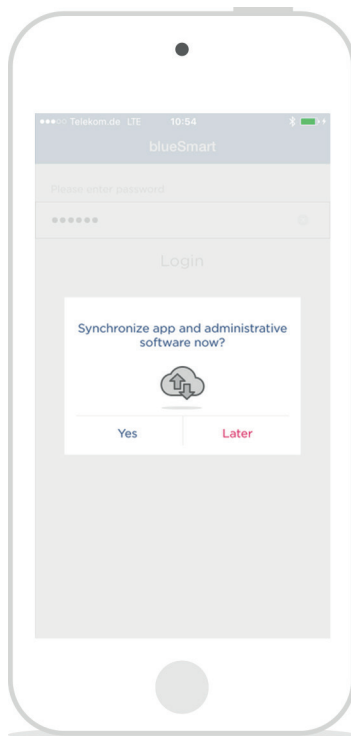
5.3 Enter password



In case the Touch ID of your iPhone is configured, it is standardly used for login. Please make the settings in the device settings of your iPhone. Optionally it is also possible to log on using the password. To do so, please enter your password and press on "login" to confirm. Each Active Key has a password of its own.

The password is stored in the blueControl Professional administration software by the system administrator who is the only person authorised to change it.

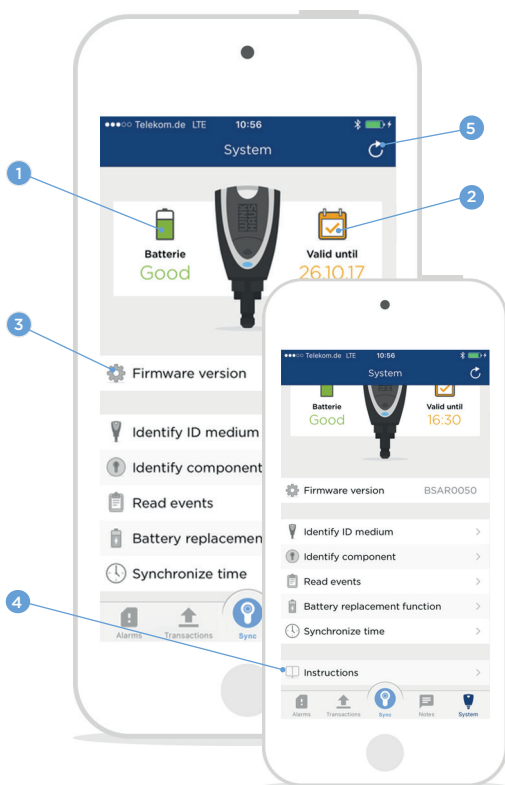
5.4 Synchronize with central administration software:



In order to synchronize the transactions and to refresh the temporary validity of the Active Key, the app needs to be synchronised with the blueControl Professional administration software. Synchronization requires an Internet connection of the smartphone.

Transactions that may still exist or other actions (e. g. identification of components) are possible to be performed without renewed synchronization with the administration software.

5.5 Start screen:



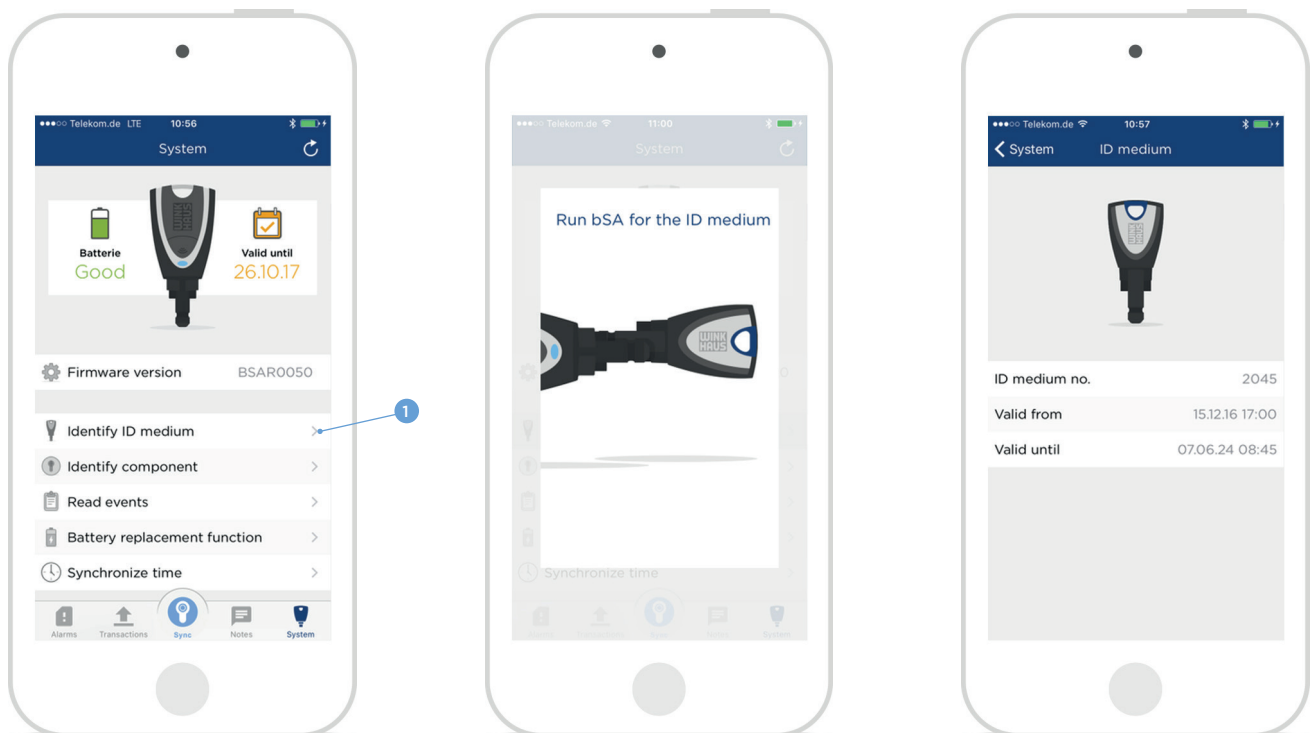
The start screen of the app is determined by transactions or alarms. If there are any, the app starts with the screen in question with priority set on alarms. If there are no transactions or alarms, the “System” screen is shown. From here you can carry out further actions.

The “System” screen displays the battery state (1), the validity (2) and the firmware version (3) of the selected Active Key. The user manual of the app will be indicated by scrolling the screen and pressing on Instructions (4).

By means of the refresh button (5) the information of the app and the administration software is synchronised and updated.

5.6 Identify ID medium:

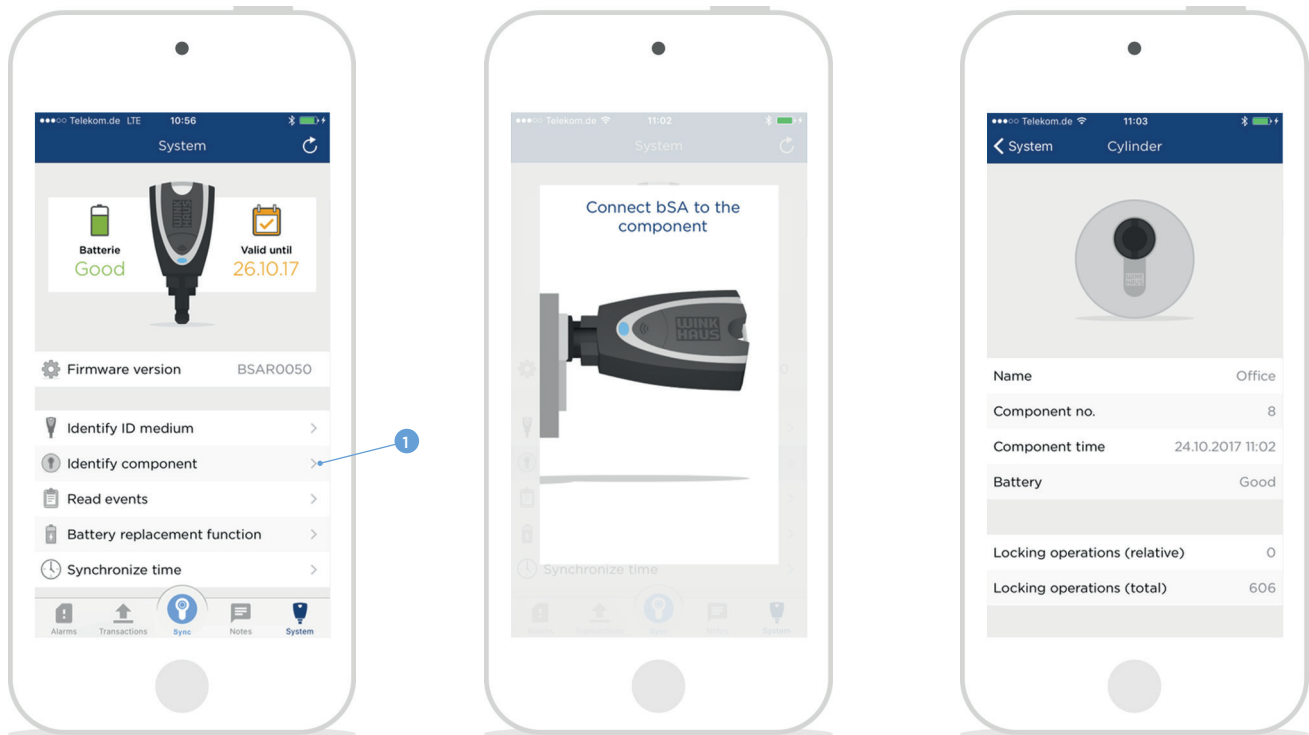
Unknown ID media can be identified. The information on the identification medium is displayed once it is identified.



1. Choose the “System” menu.
2. Press on “Identify ID medium” (1).
3. Hold the Active Key towards the identification medium.
4. The information is displayed.

5.7 Identify component:

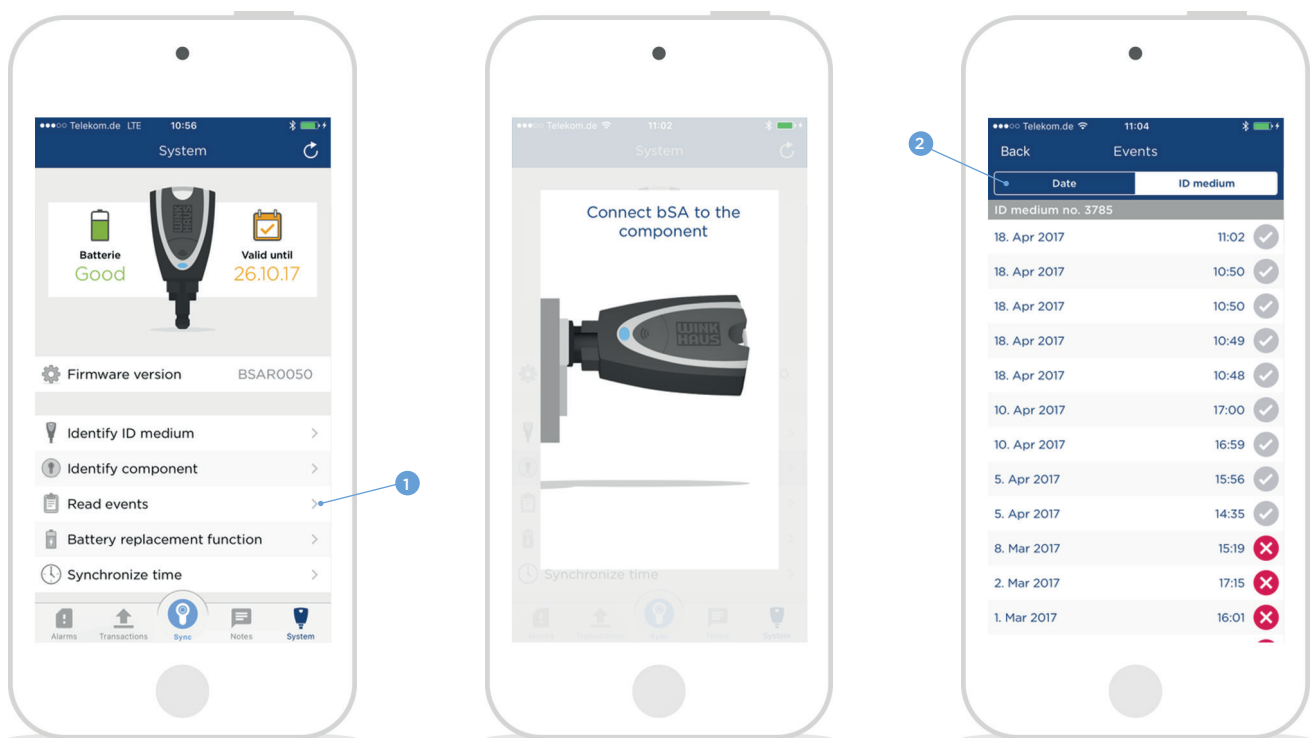
It is also possible to identify unknown components. The information about the component is displayed once it is identified.



1. Choose the "System" menu.
2. Press on "Identify component" (1).
3. Connect Active Key and component.
4. The information is displayed.

5.8 Read events:

The components' events can be read out and indicated. On the next synchronisation the newly-read events are transferred to the administration software.



1. Choose the "System" menu.
2. Press on "Read events" (1).
3. Connect Active Key and component.
4. Choose whether all events or only new ones are to be indicated.
5. The information is displayed.
6. Using the upper button (2), you can sort events according to date or key number.

Using the data protection module:

When the data protection module of the blueControl Professional software is used, there are different functions:

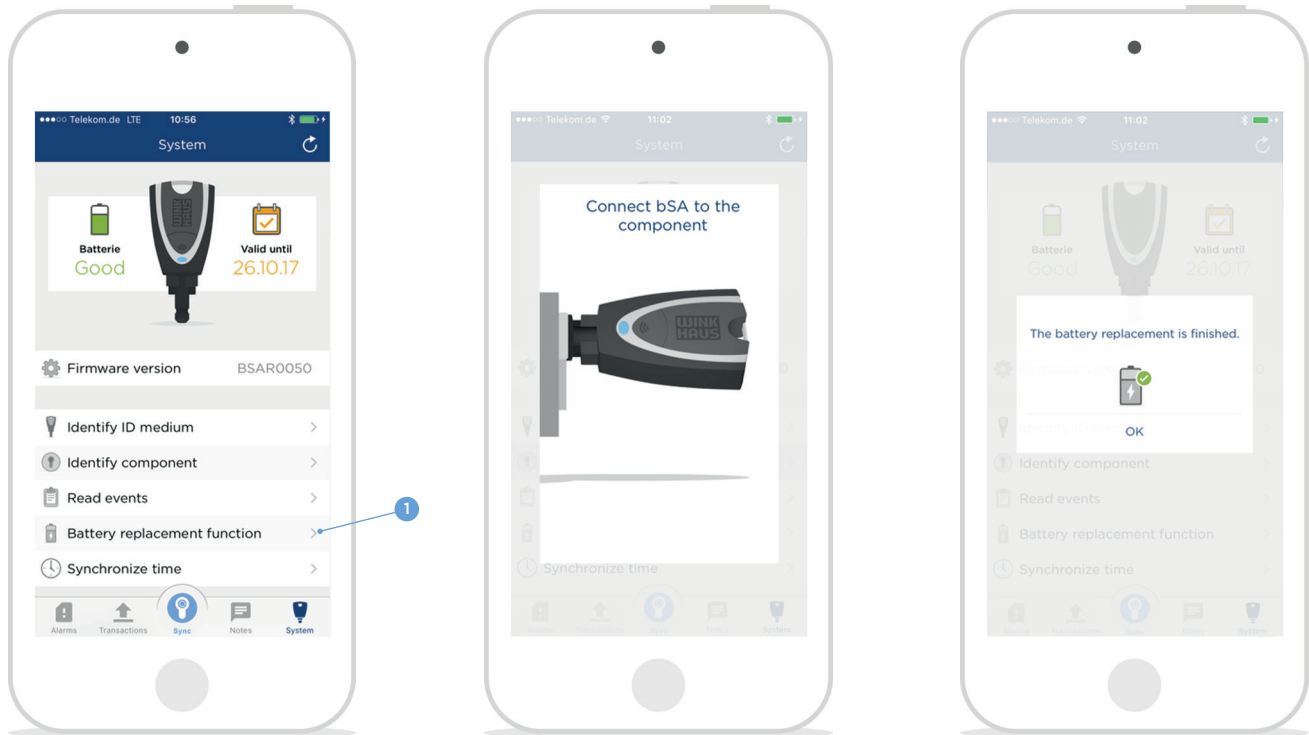
- **Read-out of events is deactivated**
After selection of the menu item "Read events" (1) the following message is indicated: "Read-out of events is deactivated". No events from the component are read out, saved or indicated.
- **Events are read without being displayed**
After connecting the blueSmart Active Key to the component, the events are read. There is a message "The events were successfully read", but events are not indicated. On the next synchronization the data is transmitted to the blueControl Professional software.



Note: The last 2,000 events are saved onto a ring buffer. This means that beyond 2,000 locking events the oldest events are overwritten by the new ones.

5.9 Battery replacement function:

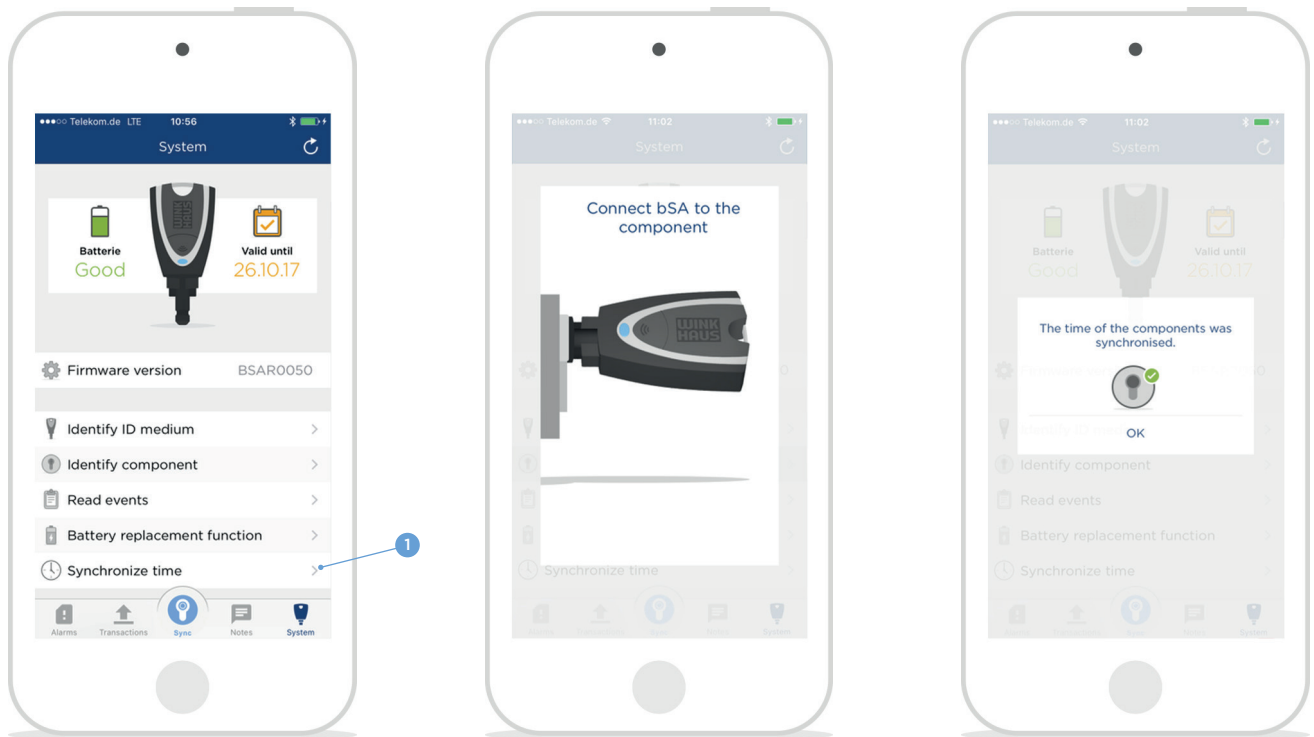
Any battery replacement on a component requires subsequent performance of the battery replacement function. This will synchronise the component time and reset the number of locking operations since the last battery change.



1. Choose the "System" menu.
2. Press on "Battery replacement function" (1).
3. Connect Active Key and component.
4. The counter of locking operations since the last battery change is reset and the component time synchronized.

5.10 Synchronize time:

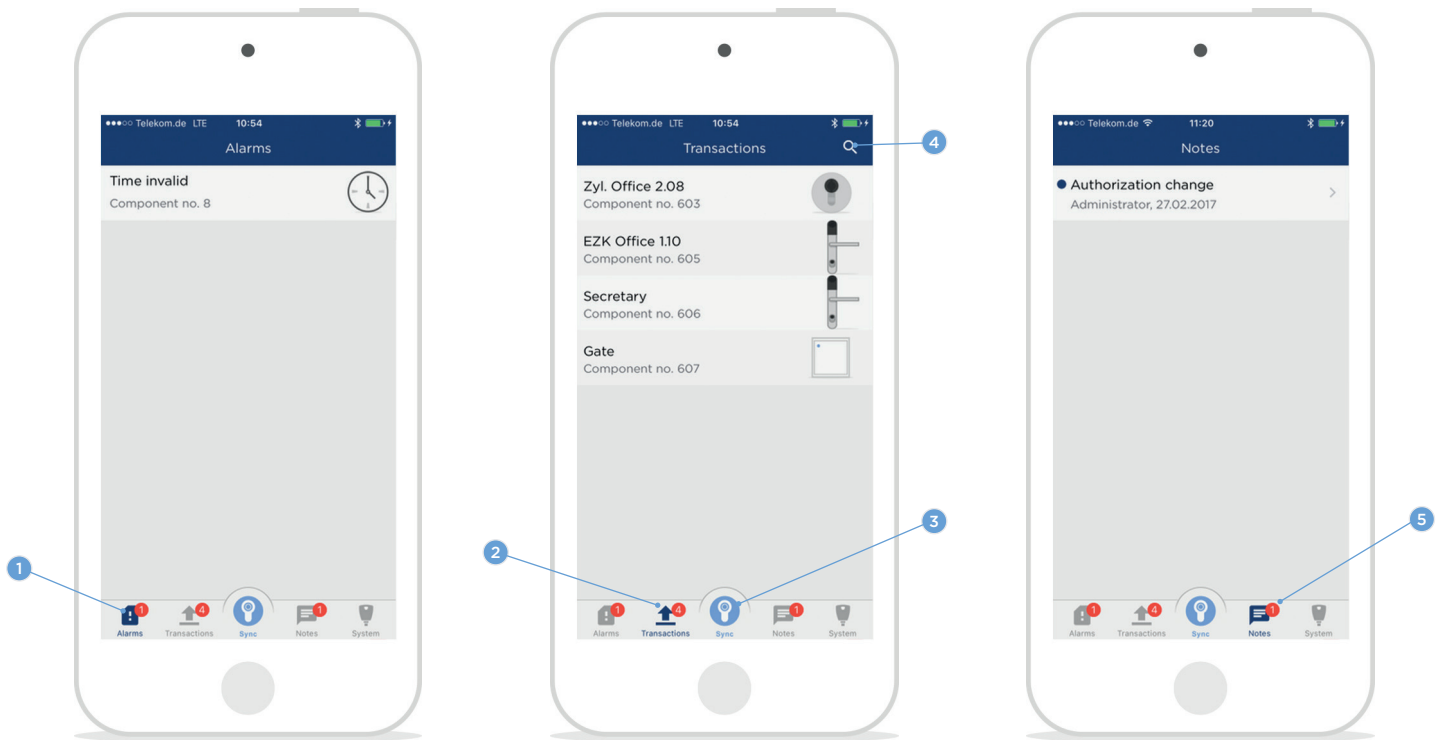
The function “Synchronize time” sets the time within a component, without putting to zero the counter status “Locking operations since last battery change”.



1. Choose the “System” menu.
2. Press on “Synchronize time” (1).
3. Connect Active Key and component.
4. The component’s clock time is synchronized.

6 Tab Bar functions:

With the Tab Bar it is possible to call up further menu items.



Alarms (1): They include all warning messages of the locking system's components (e. g. low battery or invalid clock). When synchronised with the blueControl Professional software, the alarms are reported to the software and deleted from the list.

Transactions (2): All transactions which have not yet been carried out are displayed. For implementation connect the component in question with the blueSmart Active Key and press the Sync button (3) or one of the indicated transactions. By pulling down the list you can synchronize the transactions with the administration software. The search function (4) enables you to look for components names or numbers.

Notes (5): Notes that have been established by the administrator in the central administration software are indicated here.

7 Error elimination and description:

The following list shows possible error messages and the measures taken for elimination:

Error message:	Possible measure for elimination
The password for the certificate is not correct.	Please try again. If the problem continues to exist, the certificate file is probably damaged. Please contact your system administrator.
Error importing the certificate	Please try again. If the problem continues to exist, the certificate file is probably damaged. Please contact your system administrator.
Key data could not be read.	Data on the Active Key is damaged. Please repeat synchronisation with administration software.
The ID medium belongs to a different system!	ID medium is attributed to a different system as the Active Key. You can only use components of the same system.
No ID medium was found!	Please check the connection between the Active Key and the ID medium. Please use the suitable connection piece for keys. As cards are concerned, please make sure that the Active Key is positioned in the centre of the card.
Error in Hitag-communication	Please check the connection between the Active Key and the component. For locking cylinders please check whether the Active Key has been correctly inserted into the locking cylinder.
No component was found!	Please check the connection between the Active Key and the component. For locking cylinders please check whether the Active Key has been correctly inserted into the locking cylinder.
The component belongs to a different system!	The component is attributed to a different system as the Active Key. You can only use components of the same system.
Identification failed.	Please check the connection between the Active Key and the component. For locking cylinders please check whether the Active Key has been correctly inserted into the locking cylinder.
The component has no battery.	The battery replacement function can only be performed on components containing a battery. This means it is not possible for readers or passive cylinders.
Reading of events is deactivated.	Read-out of locking events was deactivated by the system administrator.
The entered password is incorrect.	Please check your entry or contact the system administrator.
The connection to the service could not be established.	Please check the internet connection of your smartphone.

If you are not able to solve the problem with the help of the measures mentioned above, please contact your specialized dealer.

Aug. Winkhaus GmbH & Co. KG

Hessenweg 9
D-48157 Münster
T +49 251 4908-0
F +49 251 4908-145

winkhaus.de
zutrittsorganisation@winkhaus.de